



Adidja Amani¹, Benjamin Schreiber¹, Imran Mirza¹, Aka Lépri Nicaise², Epa Kouakou³, Kouadio Sie Kabran⁴, Abdou Aziz Gbaya⁵, Gervais Gahongano⁴, Abdoul Gadiy Fadiga³, Oniovo Efe-Aluta⁶, Brou Gbotto², Kossia Yao², Ekra Kouadio Daniel²
¹ Global Covid-19 Vaccine Delivery Partnership COVDP, ² Ministry of Health, Public Hygiene and Universal Health Coverage of Cote d'Ivoire, ³ UNICEF Country Office Cote d'Ivoire, ⁴ WHO Country Office Cote d'Ivoire, ⁵ UNICEF West and Central Africa Regional Office, ⁶ WHO inter-Country Support Team of West Africa

Background

On April 12, 2023, the National Security Council of Côte d'Ivoire decided to lift the state of emergency and integrate COVID-19 activities into routine healthcare due to the country's successful control of the pandemic. To facilitate the integration of COVID-19 vaccination into national immunization programs, a collaborative initiative by UNICEF, WHO, GAVI, and partner organizations developed the COVID-19 Vaccine Integration mapping Tool. A joint mission by WHO-UNICEF visited Côte d'Ivoire to field test the tool and support the integration processes

Specific Aims & Objectives

To document the piloting of the integration mapping tool and assess the level of COVID-19 vaccination integration into primary healthcare and routine immunization in Côte d'Ivoire. The specific objectives included describing the piloting process, gathering feedback on the tool's usefulness and challenges, and developing a roadmap for integration priorities....

Methods

The study was descriptive, collecting data from various sources including the Expanded Program on Immunization and the EPI database. The workshop conducted to field test the COVID-19 integration mapping tool in Côte d'Ivoire, included participants from all major health programs and was implemented under the guidance of the Ministry of Health and Universal's coverage cabinet. The workshop included preparatory meetings, briefings, presentations, scoring of building blocks, group work, and the development of a roadmap for integration. Data analysis was performed using Excel, and results were presented through tables, heat maps, and line graphs.

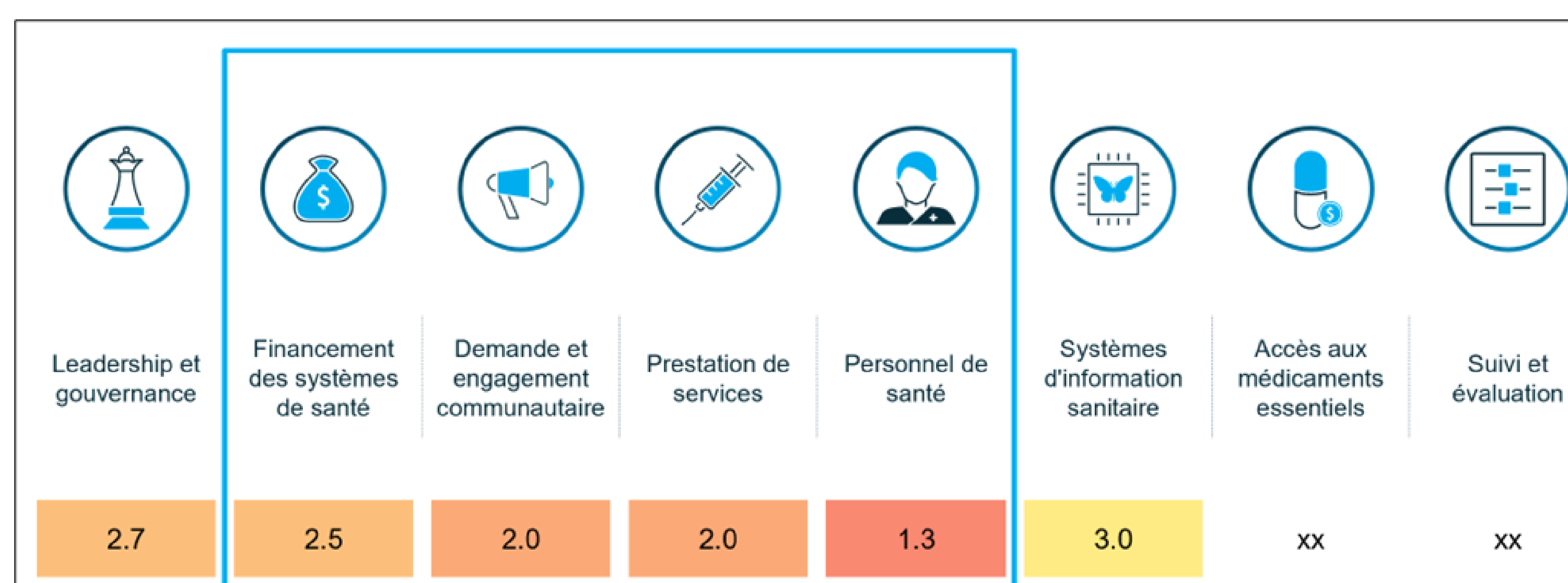
Results

The integration of COVID-19 vaccines into Côte d'Ivoire's health system showed a moderate progress, with leadership and governance scoring 2.7. Critical issues included the absence of national vaccination policies and guidelines, conflicts in planning due to prioritization, and a lack of standards for microplanning and integrated vaccination strategies for travelers. It is worth noting that Cote d'Ivoire has a circular note in place that outlines the governments priority to integrate Covid-19 vaccination into existing programs.

Financing received a score of 2.5, indicating room for improvement in resource allocation and payment systems. Service delivery and integrated implementation strategy scored 2, highlighting the need for better vaccine delivery, administration, and overall integration strategies. Identification of target populations and distribution points, as well as quality of care mechanisms, require improvement, scoring 2. Health personnel and training received scores of 1.3 and 2, respectively, indicating a need for increased support and resources for healthcare workers involved in vaccine distribution.

Health information systems scored 3, indicating a good level of support, while access to essential medicines received a score of 3.3, demonstrating good availability. Purchasing and procurement management and cold chain/storage systems scored 4, indicating effective management. Stock management, integration into existing programs, intersectoral collaboration, national health strategy, integrated communication strategy, community participation, and social listening/behavioral data utilization all scored 2, suggesting areas for improvement in these aspects of the vaccination process. routine immunization, establishing a mutual fund for funding immunization activities, and improving communication and community engagement. Overall participants found the tool useful and attributed an overall score of 7.7 over 10

Graphs/Figures



Conclusions

This pilot exercise of the integration mapping tool in Cote d'Ivoire was overall rated positive. The main added value of the process lied in high level political commitment to work on integration, an expert-facilitated workshop with adequate time to discuss complex topics on integration, an assessment of the integration process using established guidelines and the establishment of a roadmap, which is essential for successful integration planning. ...

Acknowledgements

We thank the Ministry of Health , Public Hygiene and Universal Health Coverage of Cote d'Ivoire for supporting this mission

References

1. Ministère de la Santé et de l'Hygiène Publique et de la Couverture Maladie Universelle (MSHP-CMU), Plan National de Riposte à la COVID-19 (PA COVID 19)
2. Plan national de vaccination et de déploiement des vaccins contre la COVID-19 en Côte d'Ivoire Réf. : EN06-M02 Création : 22/04/2022 Version : 01 Pages :82 /82
3. Considerations for integrating COVID-19 vaccination into immunization programmes and primary health care for 2022 and beyond. Geneva: World Health Organization and the United Nations Children's Fund (UNICEF), 2022. Licence: CC BY-NC-SA 3.0 IGO <https://apps.who.int/iris/bitstream/handle/10665/366171/9789240064454-eng.pdf>
4. Communiqué du Conseil National de Sécurité du 12 avril 2023 Communiqué du Conseil National de Sécurité <https://www.rti.info/securite/2023/4/12/communiqué-du-conseil-national-de-securite-du-12-avril-2023>
5. Ministère de la Santé et de l'Hygiène Publique et de la Couverture Maladie Universelle (MSHP-CMU), Plan National de Développement Sanitaire 2016-2020, RCI