

When families closed their homes to vaccines:

STORIES OF HESITANCY, MISTRUST AND STRUCTURAL CHALLENGES

Evidence from a large-scale qualitative study in urban and rural Philippines

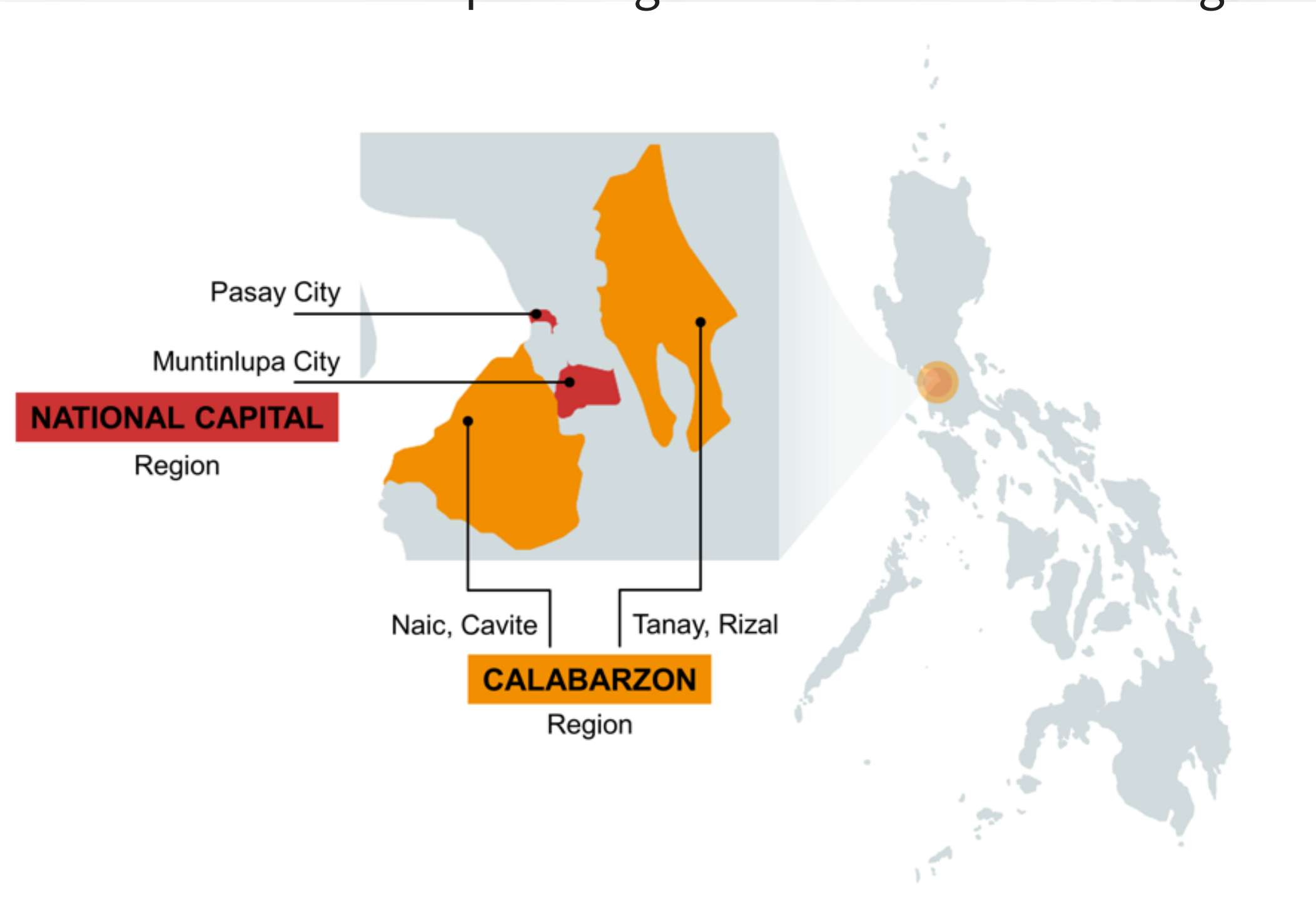
Mark Donald C. Reñosa^{1,2}, Vivienne Endoma¹, Johanna Beulah Sornillo¹, and Project IMPACT Working Group^{1,2,3*}

¹Department of Epidemiology and Biostatistics, Research Institute for Tropical Medicine – Department of Health, Muntinlupa, Philippines
²Heidelberg Institute of Global Health, University of Heidelberg, Heidelberg, Germany
³Save the Children Philippines, Quezon City, Philippines
⁴Center for Utilizing Behavioral Insights for Children, Save the Children International

BACKGROUND & STUDY AIMS

Vaccine hesitancy has received widespread recognition for having a significant impact on successful and cost-effective immunization programs around the world. Our study explores the perceived concerns about vaccines among Filipino families, healthcare workers (HCWs), and local actors in rural and urban communities of the Philippines.

Figure 1. Map of the Philippines, showing the four study areas in National Capital Region and CALABARZON region.



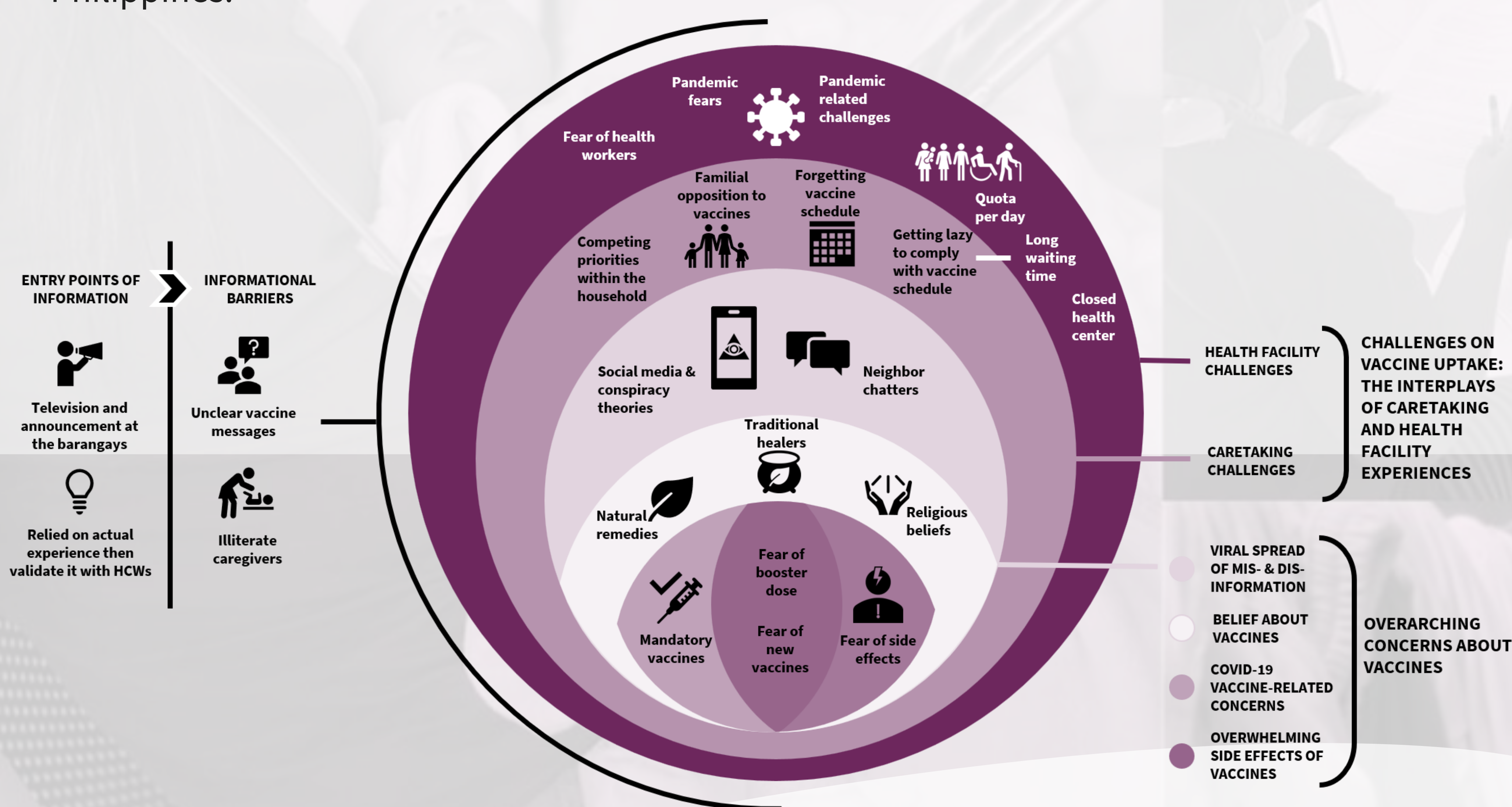
METHODS

- Between May to June 2022, we performed:
1. In-depth interviews (IDIs) among parents or caregivers of under two, pregnant mothers, senior citizens, parents of adolescents, and adolescents (with at least one person with a disability across the target population)
 2. IDIs and FGDs with HCWs
 3. Observations of public health facilities
 4. IDIs with local stakeholders

All interview data were recorded, transcribed, and translated into English. Themes emerging from daily debriefings or covered in interview guides formed the basis of a codebook. Data analysis was guided by the tenets of grounded theory and coding was performed using NVivo 12 software.

RESULTS

Our results, grounded on the social ecological model, underlined the interplay between contextual challenges, respondents' internal beliefs and concerns, and informational needs.



CONCLUSIONS & RECOMMENDATIONS

The volatility of vaccine decision-making, combined with the rampant spread of misinformation across traditional and social media channels, necessitated a rethinking of our current immunization process, re-calibration of the health workforce, and re-invigoration of health information delivery channels for more inclusive and responsive health care.

While our study reveals significant vaccination challenges, it also reminds us of the chances and actions we should take, which focus on inclusivity, equity, and responsiveness. Our insights could help strengthen our shared hope and vision of leaving no one behind – where families allow vaccines back into their homes and lives.

ACKNOWLEDGEMENTS

We acknowledge other members of the Project IMPACT working Group: Thea Andrea Bravo¹, Jhoys Landicho-Guevarra¹, Mila Aligato¹, Jeniffer Landicho¹, Bianca Joyce Sornillo¹, Maria Paz Demonteverde¹, Catherine Silvestre¹, Carol Malacad¹, Lourdes Pambid³, Jimena Llopis⁴, Cecilia Francisco³, Marianette T. Inobaya¹.